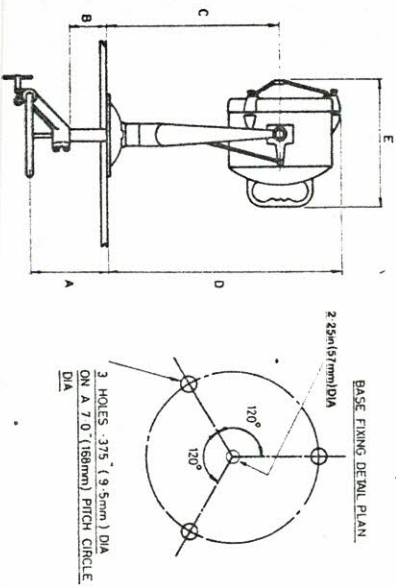


# Francis

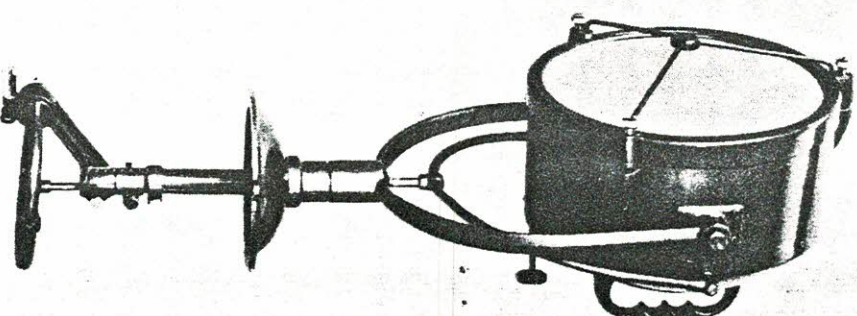
Francis Searchlights Limited, Turner Bridge, Bolton, Lancashire, England.

Telephone: Bolton 27196/7/8 Telegrams: Francis Bolton Telex: 63486

## M15 9' and 11' Diameter



	Diameter	A	B	C	D	E	Width
inch	9	7.25	3.5	14.25	19	10.5	11.5
	11	7.25	3.5	15.25	20.5	11.875	13.5
mm	229	184	89	362	483	267	292
	280	184	89	387	521	302	343



### M.15 9"

Mirror Dia.	Volts		Watts	Lamp Ref.	Lamp Cap	Francis No.	P.B.C.P.	Focus'd Divergence	Range	
	inch	mm							Yards	Metres
8	203		6	55	455A	3040	544,000	1°	800	731
			12	100	A1/215	3018	603,000	1°	840	768
			24	150	A1/216	3047	745,000	1.25°	950	869

M.15 Searchlights are of all brass construction, non-magnetic and fitted with Admiralty type lead backed optical glass reflectors, toughened front cover glass and adjustable focus. Supplied in grey, chrome or polished brass finish.